

You can access the User guide on Samsung's on-line customer support center by scanning the QR code on the left. To see the manual on your PC or mobile device, download the manual in document format from Samsung's website. (<http://www.samsung.com/support>)

- Figures and illustrations in this User Manual are provided for reference only and may differ from actual product appearance.
- An administration fee may be charged if either:
  - (a) an engineer is called out at your request and there is no defect with the product (i.e. where the user manual has not been read).
  - (b) you bring the unit to a repair centre and there is no defect with the product (i.e. where the user manual has not been read).
- You will be informed of the administration fee amount before a technician visits.

Contact SAMSUNG WORLD WIDE  
If you have any questions or comments relating to Samsung products, please contact the SAMSUNG customer care Centre.

Country/Region	Samsung Service Center ☎	Web Site
UK	0333 000 0333	<a href="http://www.samsung.com/uk/support">www.samsung.com/uk/support</a>
IRELAND (EIRE)	0818 717100	<a href="http://www.samsung.com/ie/support">www.samsung.com/ie/support</a>

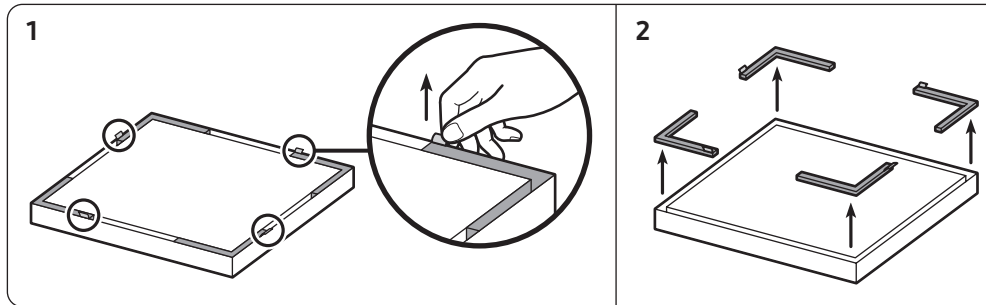
## 01 CHECKING THE COMPONENTS

- Wireless Speaker main unit
- Stand
- AC/DC Adapter
- Power Cord
- Photo Frame
- Component for Art Panel (sold separately)
  - Holder-Plate x 4
  - Holder-Guide x 1
- Wallmount Component
  - Wallmount Guide
  - Bracket-Wall Rear x 1
  - Screw (M5 X L55) x 2
  - Anchor x 2
  - Holder-Screw x 1
  - Spacer x 2

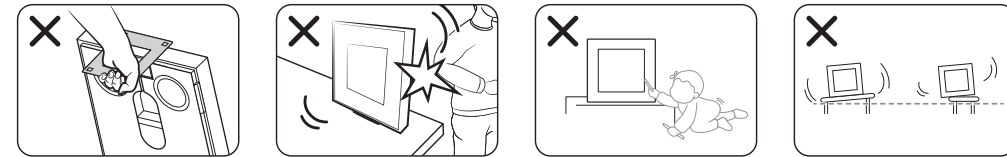
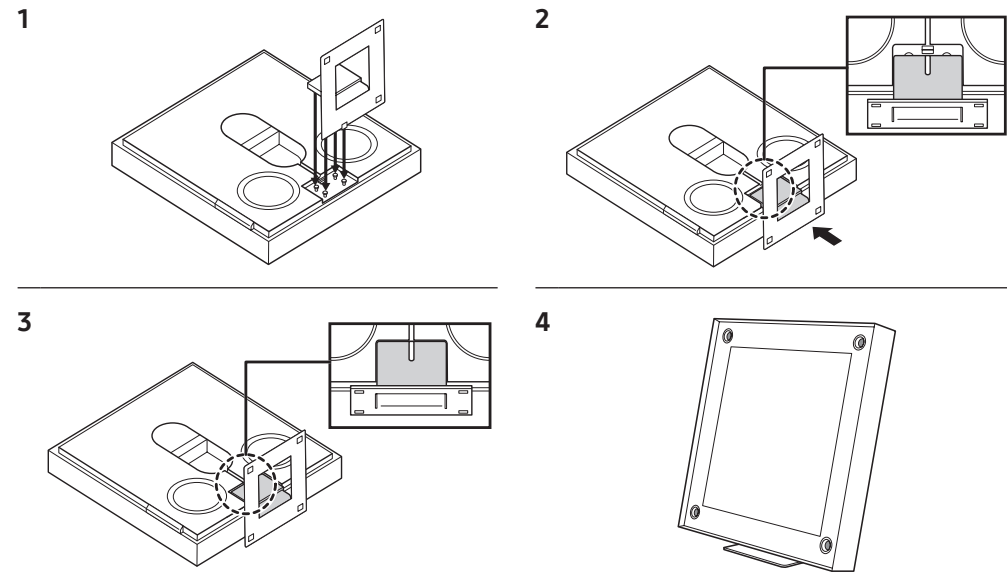
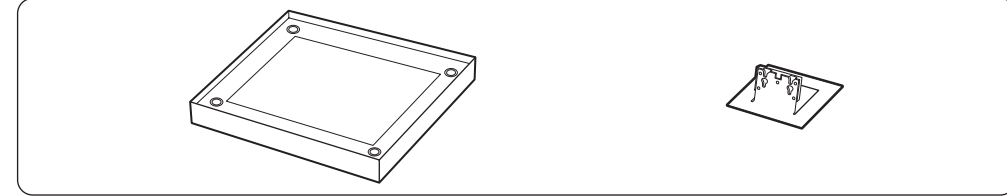
### NOTE

- To purchase additional components or optional cables, contact a Samsung Service Center or Samsung Customer Care.

## 02 DETACHING THE PROTECTION RUBBER



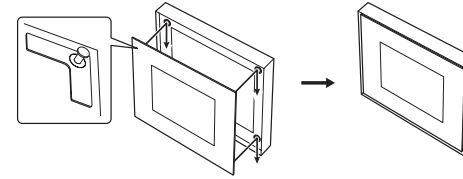
## 03 ATTACHING THE STANDS



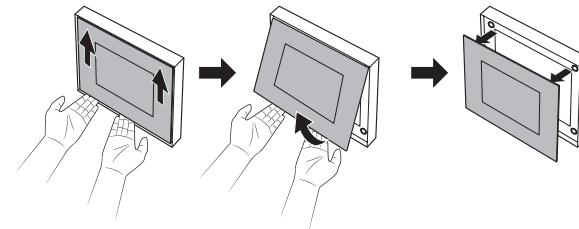
## 04 ATTACHING THE PHOTO FRAME & ART PANEL

### Attaching the PHOTO FRAME

Be sure to secure the photo frame properly. Otherwise, it may fall off and cause damage or physical injury. Any accident resulting from carelessness by the user shall not be covered by the warranty.



### Detaching the Photo Frame

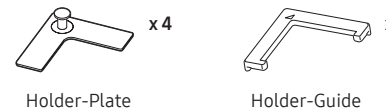


### Replacing the photo in the Photo Frame

For relevant information, visit the Samsung web site (<http://www.samsung.com/support>) and refer to the User Guide of this product.

### Attaching ART PANEL

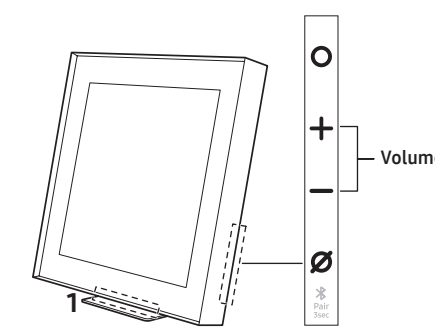
You can use the below two component parts (provided) to insert your art panel (sold separately) instead of the photo frame.



- For details on installation, see the user guide of this product at [www.samsung.com](http://www.samsung.com).
- The art panel is available on the Marpple online shop (<https://www.marpple.com/musicframe>), and the availability may differ with your region. For regional retailers, visit your local Samsung web site ([www.samsung.com](http://www.samsung.com)).
- Distribution of the art panel is performed by third-party businesses that has nothing to do with the company. And the panel's quality and safety is solely subject to the third-party businesses. Regional retailers may change depending on their business situation.

## 05 PRODUCT OVERVIEW

### Front



### (Multi Function) Button

In standby mode, press the **(Multi Function)** button to turn on the Wireless Speaker. Press the **(Multi Function)** button to change the mode.

### (Mic On/Off) Button

Press the button to turn the microphone on or off. When the microphone is off, the LED indicator will light red.

To switch to **Bluetooth Pairing** state, press and hold the **(Mic On/Off)** button on the side of the Wireless Speaker for more than 3 seconds.

### 1 LED indicator

The LED Indicator flashes, glows, or changes color depending on the Wireless Speaker's current mode or status.

### D. IN (OPTIONAL)

Connect to the digital (optical) output of an external device.

### SMARTTHINGS DONGLE

Connect the SmartThings dongle (Purchase separately) to use the SmartThings Hub function.

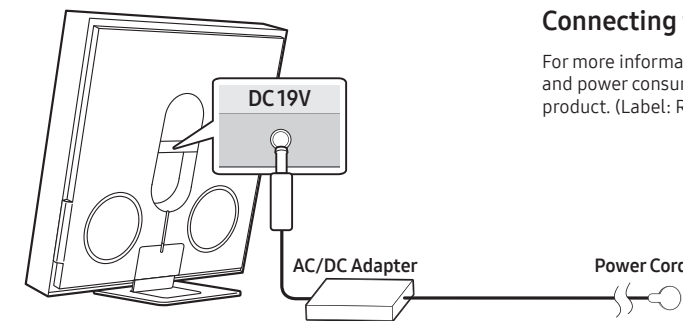
### DC 19V

Connect the AC/DC power adapter. (Power Supply In)

## 06 CONNECTING THE POWER

### Connecting the power and units

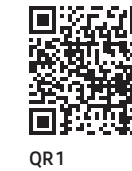
For more information about the required electrical power and power consumption, refer to the label attached to the product. (Label: Rear of the Wireless Speaker Main Unit)



## 07 CONNECTING THE SMARTTHINGS APP

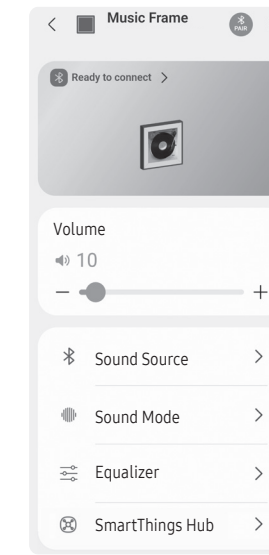
### 1 Installation

- The SmartThings app allows you to control the functionality of and adjust the settings of the Wireless Speaker.
- Download the SmartThings app from the app store of your mobile device, or simply scan the provided QR code and download the app.
- QR 1: Video Guide for SmartThings App Connection
- QR 2: Download SmartThings App



### 2 Device registration

- Run the SmartThings app on your mobile device.
  - Follow the on screen instructions and add the product to your mobile device.
- If the automatic pop-up window does not appear, press **(+)** on the Home screen to register the product.



### 3 Control with SmartThings

- With the SmartThings app open on your device, select the Wireless Speaker that you have added.
  - The settings menu of the Wireless Speaker appears, where you can adjust the various settings including Volume, Sound Mode or Advanced Sound Settings.
- For other users who want to control the **Music Frame**, tap **Menu** (☰) on the SmartThing app of their mobile device and go to 'How to use' → 'Share control of devices' for reference.

### NOTE

The illustration right may differ with the app version.

## 08 CONNECTING VIA WIFI WITH TV

Change the input source of the TV by using the Audio menu to Wireless Speaker.

- Samsung TVs released in 2017 or later: (⌂) → Sound → Sound Output → Music Frame (Wi-Fi)

### NOTE

- Wi-Fi connection is available only on Samsung TV.
- The TV and Wireless Speaker must be connected to the same wireless network (Wi-Fi).
- The menus may differ depending on the year of manufacture, refer to your TV manual.



## 09 USING THE Q-SYMPHONY FUNCTION

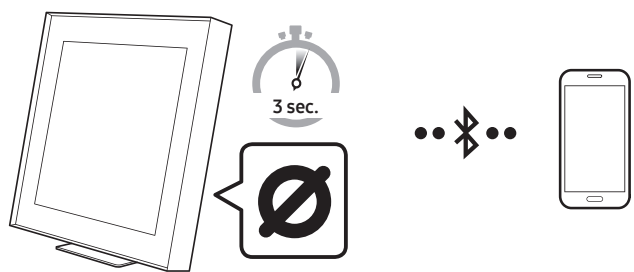
- This function is supported only when both the wireless speaker and the TV are connected to the same Wi-Fi network.
- This function is available with new Samsung TV models to be released in 2024.

When the Wireless Speaker connects to a Samsung TV that supports the Q-Symphony function, you can play the sound simultaneously through the Wireless Speaker and the TV. If you use the Q-Symphony function, the surround sound played on the Wireless speaker allows you to enjoy a richer, more three-dimensional surround sound effect.

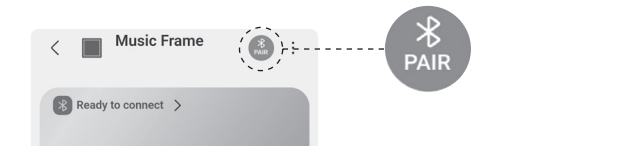
When the Wireless Speaker is connected, "Q-Symphony" menu appears on the TV. (The message displayed may differ with the TV model.)

(Settings (⚙️) → All Settings (⚙️) → Sound → Sound Output)

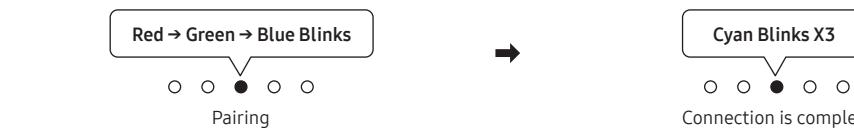
## 10 CONNECTING VIA BLUETOOTH WITH MOBILE



- Press **⏻ (Mic On/Off)** button for 3 seconds for pairing.
  - It is also available to pair by pressing [⚙️] on the SmartThings App screen of your mobile device.



- Search for the Bluetooth device on your mobile device.
  - TV can be connected in the same way.



### NOTE

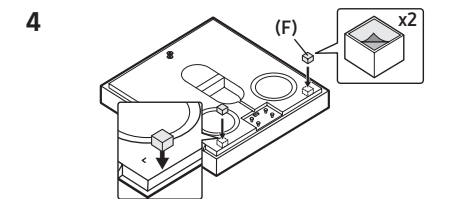
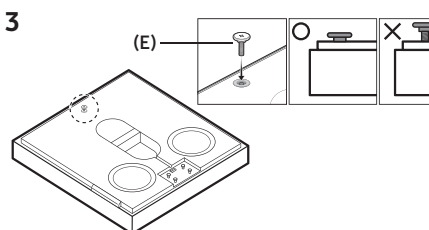
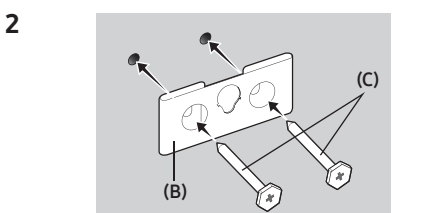
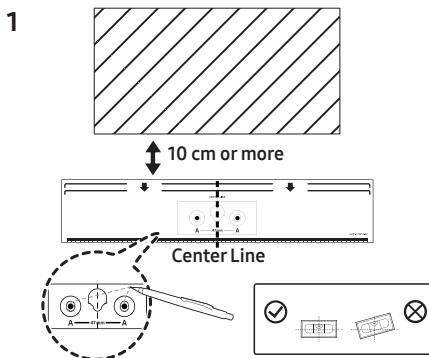
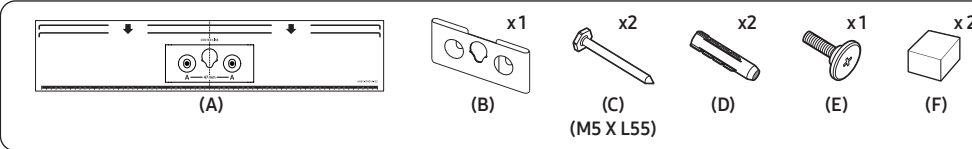
If asked for a PIN code when connecting a Bluetooth device, enter **#0000#**.

## 11 INSTALLING THE WALL MOUNT

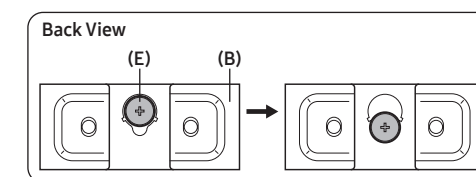
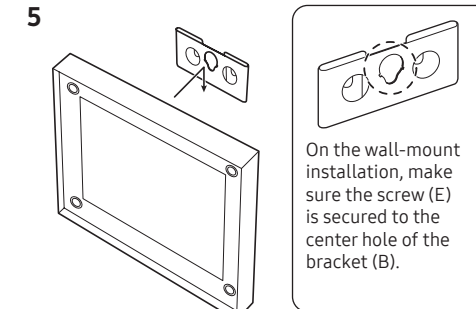
### Installation Precautions

- Install on a vertical wall only.
- Do not install in a place with high temperature or humidity.
- Verify whether the wall is strong enough to support the product's weight. If not, reinforce the wall or choose another installation point.
- Connect cables from the unit to external devices before you install the Soundbar on the wall.
- Make sure the unit is turned off and unplugged before you install it. Otherwise, it may cause an electric shock.
- Make sure you use the provided wall-mount component parts. Under any circumstances, any accident resulting from using third-party parts shall not be covered by the warranty

### Wallmount Components



The part (F) must be attached to prevent the product from moving out of the wall-mount installation. On the stand installation, it must be kept safely for later use. When reusing it, use a double-sided adhesive tape for attachment.



## 12 SPECIFICATIONS AND GUIDE

Model Name	HW-LS60D
Weight	
Without Stand	4.2 kg
With Stand	4.6 kg
Dimensions (W x H x D)	
Without Stand	353.0 x 353.0 x 54.2 mm
With Stand	353.0 x 364.8 x 143.4 mm

**Operating Temperature Range:** +10 °C to +40 °C  
**Operating Humidity Range:** 10 % to 80 %, non-condensing  
**Storage Temperature Range:** -20 °C to +45 °C  
**Storage Humidity Range:** 5 % to 95 %, non-condensing

**Supported play formats**  
Dolby 5.1ch / Dolby Digital Plus / Dolby ATMOS (Dolby Digital Plus) / LPCM 2ch

**Overall Standby Power Consumption (W):** 2.0 W

### To activate/deactivate Wi-Fi connection

Press and hold the **⏻ (Mic On/Off)** button and the **-** button on the side panel simultaneously for more than 30 seconds. This will turn on or off the Wi-Fi connection.

### To activate/deactivate Bluetooth connection

Press and hold the **⏻ (Mic On/Off)** button and the **+** button on the side panel simultaneously for more than 30 seconds. This will turn on or off the Bluetooth connection.

**Precaution: The Wireless speaker will restart automatically if you turn on/turn off Wi-Fi or Bluetooth.**

### NOTE

- Samsung Electronics Co., Ltd reserves the right to change the specifications without notice.
- Weight and dimensions are approximate.
- Hereby, Samsung declares that this radio equipment is in compliance with Directive 2014/53/EU and the relevant UK statutory requirements.

The full text of the declaration of conformity is available at the following internet address:  
<http://www.samsung.com> go to Support and enter the model name.

This equipment may be operated in all EU countries and in the UK.

The 5GHz WLAN(Wi-Fi or SRD) function of this equipment may only be operated indoors.

- WIRELESS DEVICE OUTPUT POWER RF max transmitter power:**  
100mW at 2.4GHz-2.4835GHz,  
200mW at 5.15GHz-5.25GHz & 5.47GHz - 5.725GHz  
100mW at 5.25GHz-5.35GHz



(Applicable in countries with separate collection systems)

This marking on the product, accessories or literature indicates that the product and its electronic accessories (e.g. charger, headset, USB cable) should not be disposed of with other household waste at the end of their working life. To prevent possible harm to the environment or human health from uncontrolled waste disposal, please separate these items from other types of waste and recycle them responsibly to promote the sustainable reuse of material resources.

Household users should contact either the retailer where they purchased this product, or their local government office, for details of where and how they can take these items for environmentally safe recycling.

Business users should contact their supplier and check the terms and conditions of the purchase contract. This product and its electronic accessories should not be mixed with other commercial wastes for disposal.

For information on Samsung's environmental commitments and product specific regulatory obligations e.g. REACH, WEEE, Batteries, visit:  
[www.samsung.com/uk/aboutsamsung/sustainability/environment/our-commitment/data/](http://www.samsung.com/uk/aboutsamsung/sustainability/environment/our-commitment/data/)

### COMMISSION REGULATION (EU) 2019/1782

Ecodesign requirements for external power supplies:  
[www.samsung.com/global/ecodesign\\_component](http://www.samsung.com/global/ecodesign_component)

## 13 TROUBLESHOOTING

Before seeking assistance, check the following.

### Wireless Speaker does not turn on.

- Check whether the power cord of the Wireless Speaker is correctly inserted into the outlet.

### Wireless Speaker works erratically.

- After removing the power cord, insert it again.
- Try again after initializing the product.
- If there is no signal, the Wireless Speaker automatically turns off after a certain period of time. Turn on the power.

### The red LED indicator light on the Wireless Speaker stays on.

- The microphone is turned off. Turn on the microphone.

LED indicator	
○ ○ ● ○ ○ - Red on	Mic Off
○ ○ ○ ○ ○	Mic On

### Sound is not output from the Wireless Speaker.

- The volume of the Wireless Speaker is too low or muted. Adjust the volume.
- When any external device (STB, Bluetooth device, mobile device, etc.) is connected, adjust the volume of the external device.
- For sound output of the TV, select Wireless Speaker. (Samsung TV: Home (⏻) → Menu → Settings (⚙️) → All Settings (⚙️) → Sound → Sound Output → Select Wireless Speaker)
- Remove the cable from the Wireless Speaker and then reconnect it.

### Wireless Speaker will not connect via Bluetooth.

- When connecting a new device, switch to "BT PAIRING" for connection. (Press the **⏻ (Mic On/Off)** button on the body for at least 3 seconds.)
- Reconnect it after removing the Bluetooth speaker list on the device to connect. (Samsung TV: Home (⏻) → Menu → Settings (⚙️) → All Settings (⚙️) → Sound → Sound Output → Bluetooth Speaker List)

### Sound drops out when connected via Bluetooth.

- Some devices can cause radio interference if they are located too close to the Wireless Speaker. e. g. microwaves, wireless routers, etc.
- If your device that is connected via Bluetooth moves too far away from the Wireless Speaker, it may cause the sound to drop out. Move the device closer to the Wireless Speaker.
- If a part of your body is in contact with the Bluetooth transceiver or the product is installed on metal furniture, the sound may drop out. Check the installation environment and conditions for use.

### WARNING

- To reduce the risk of fire or electric shock, do not expose this appliance to rain or moisture.
- Do not use liquid fumigators containing chemicals, such as mosquito repellent or air freshener, around the product. If steam comes in contact with the product surface or enters the product, it may cause stains or malfunction.

### CAUTION

- TO PREVENT ELECTRIC SHOCK, MATCH WIDE BLADE OF PLUG TO WIDE SLOT, FULLY INSERT.
- This apparatus shall always be connected to a AC outlet with a protective grounding connection.
- To disconnect the apparatus from the mains, the plug must be pulled out from the mains socket, therefore the mains plug shall be readily operable.
- Do not expose this apparatus to dripping or splashing. Do not put objects filled with liquids, such as vases, on the apparatus.
- To turn this apparatus off completely, you must pull the power plug out of the wall socket. Consequently, the power plug must be easily and readily accessible at all times.

## PRECAUTIONS

- Ensure that the AC power supply in your house complies with the power requirements listed on the identification sticker located on the bottom of your product. Install your product horizontally, on a suitable base (furniture), with enough space around it for ventilation (7-10 cm). Make sure the ventilation slots are not covered. Do not place the unit on amplifiers or other equipment which may become hot. This unit is designed for continuous use.  
To fully turn off the unit, disconnect the AC plug from the wall outlet. Unplug the unit if you intend to leave it unused for a long period of time.
- During thunderstorms, disconnect the AC plug from the wall outlet. Voltage peaks due to lightning could damage the unit.
- Do not expose the unit to direct sunlight or other heat sources. This could lead to overheating and cause the unit to malfunction.
- Protect the product from moisture (i.e. vases), and excess heat (e.g. a fireplace) or equipment creating strong magnetic or electric fields. Unplug the power cable from the AC wall socket if the unit malfunctions. Your product is not intended for industrial use. It is for personal use only. Condensation may occur if your product has been stored in cold temperatures. If transporting the unit during the winter, wait approximately 2 hours until the unit has reached room temperature before using.
- Make sure to rest the AC/DC Adapter flat on a table or the floor. If you place the AC/DC Adapter so that it is hanging with the AC cord input facing upwards, water or other foreign substances could enter the Adapter and cause the Adapter to malfunction.

## Wiring the Main Power Supply Plug (UK Only)

### IMPORTANT NOTICE

The mains lead on this equipment is supplied with a moulded plug incorporating a fuse. The value of the fuse is indicated on the pin face of the plug and if it requires replacing, a fuse approved to BS1362 of the same rating must be used.

Never use the plug with the fuse cover removed. If the cover is detachable and a replacement is required, it must be of the same colour as the fuse fitted in the plug. Replacement covers are available from your dealer. If the fitted plug is not suitable for the power points in your house or the cable is not long enough to reach a power point, you should obtain a suitable safety approved extension lead or consult your dealer for assistance. However, if there is no alternative to cutting off the plug, remove the fuse and then safely dispose of the plug. Do not connect the plug to a mains socket as there is a risk of shock hazard from the bared flexible cord. Never attempt to insert bare wires directly into a mains socket. A plug and fuse must be used at all times.

### IMPORTANT

The wires in the mains lead are coloured in accordance with the following code:-- BLUE = NEUTRAL BROWN = LIVE As these colours may not correspond to the coloured markings identifying the terminals in your plug, proceed as follows:-- The wire coloured BLUE must be connected to the terminal marked with the letter N or coloured BLUE or BLACK. The wire coloured BROWN must be connected to the terminal marked with the letter L or coloured BROWN or RED.

**WARNING : DO NOT CONNECT EITHER WIRE TO THE EARTH TERMINAL WHICH IS MARKED WITH THE LETTER E OR BY THE EARTH SYMBOL ⚡, OR COLOURED GREEN OR GREEN AND YELLOW.**



This Samsung product is warranted for the period of twelve (12) months from the original date of purchase, against defective materials and workmanship. In the event that warranty service is required, you should return the product to the retailer from whom it was purchased. However, Samsung Authorised Dealers and Authorised Service in the countries listed in Warranty Conditions will comply with the warranty on the terms issued to purchasers in the country concerned. Details of our Authorised Service Centres are available from:

**Samsung Electronics U.K. Ltd.**  
**Samsung Customer Support Centre**  
**Selectapost 38, Sheffield, S97 3FJ, United Kingdom**  
**United Kingdom: Tel. 0333 000 0333**  
**[www.samsung.com/uk/support](http://www.samsung.com/uk/support)**  
**EIRE: Tel. 0818 717100**  
**[www.samsung.com/ie/support](http://www.samsung.com/ie/support)**

### ■ WARRANTY CONDITIONS

- The warranty is only valid if, when warranty service is required, the warranty card is fully and properly completed and is presented with the original invoice or sales slip or confirmation, and the serial number on the product has not been defaced.
- Samsung's obligations are limited to the repair or, at its discretion, replacement of the product or the defective part. Repaired or replaced products may include new and/or refurbished components and equipment.
- Warranty repairs must be carried out by Authorised Samsung Dealers or Authorised Service Centres. No re-imbursement will be made for repairs carried out by non-Samsung Dealers and, any such repair work and damage to the products caused by such repair work will not be covered by this warranty.
- This product is not considered to be defective in materials nor workmanship by reason that it requires adaptation in order to conform to national or local technical or safety standards in force in any Country other than the one for which the product was originally designed and manufactured.
- This warranty will not cover, and no re-imbursement will be made for such adaptation nor any damage which may result.
- This warranty covers none of the following:
  - Periodic check-ups, maintenance and repair or replacement of parts due to normal wear and tear.
  - Cost relating to transport, removal or installation of the product.
  - Misuse, including the failure to use this product for its normal purposes or incorrect installation.
  - Use of this product in a commercial/ business environment, which shall include, but is not limited to, the following: any use for profit or financial gain, public display or events such as clubs, bars and restaurants including continuous statistical or graphical display, or any commercial use of continuous or intentional long term display of News reels ("tickers"), static or fixed images such as timetables and 4:3 pictures or video content displaying permanent black bars.
  - Damage caused by Lightning, Water, Fire, Acts of God, War, Public Disturbances, incorrect mains voltage, improper ventilation or any other cause beyond the control of Samsung.
  - Spillage of food or liquid or use of any other hazardous substances, which may affect the product.
  - Performance due to differences in broadcasting method between countries
- This warranty is valid for any person who legally acquired possession of the product during the warranty period.
- The consumer's statutory rights in any applicable national legislation whether against the retailer arising from the purchase contract or otherwise are not affected by this warranty Unless there is national legislation to the contrary, the rights under this warranty are the consumer's sole rights and Samsung, its subsidiaries and distributors shall not be liable for indirect or consequential loss or any damage to connected storage media or any other related equipment or material.
- Some products may differ from these guidelines. Please check with your dealer or the local Samsung web-site.
- Samsung shall honour warranties for all EU specification products purchased by a consumer within the following European countries listed:
  - UK, Republic of Ireland, Germany, France, Italy, Malta, Spain, Portugal, The Netherlands, Belgium, Luxembourg, Denmark, Sweden, Finland, Poland, Hungary, Czech Republic, Slovakia, Austria, Slovenia, Croatia, Estonia, Latvia, Lithuania, Greece, Cyprus, Romania, Bulgaria, Switzerland, Norway, Lichtenstein and Iceland.

